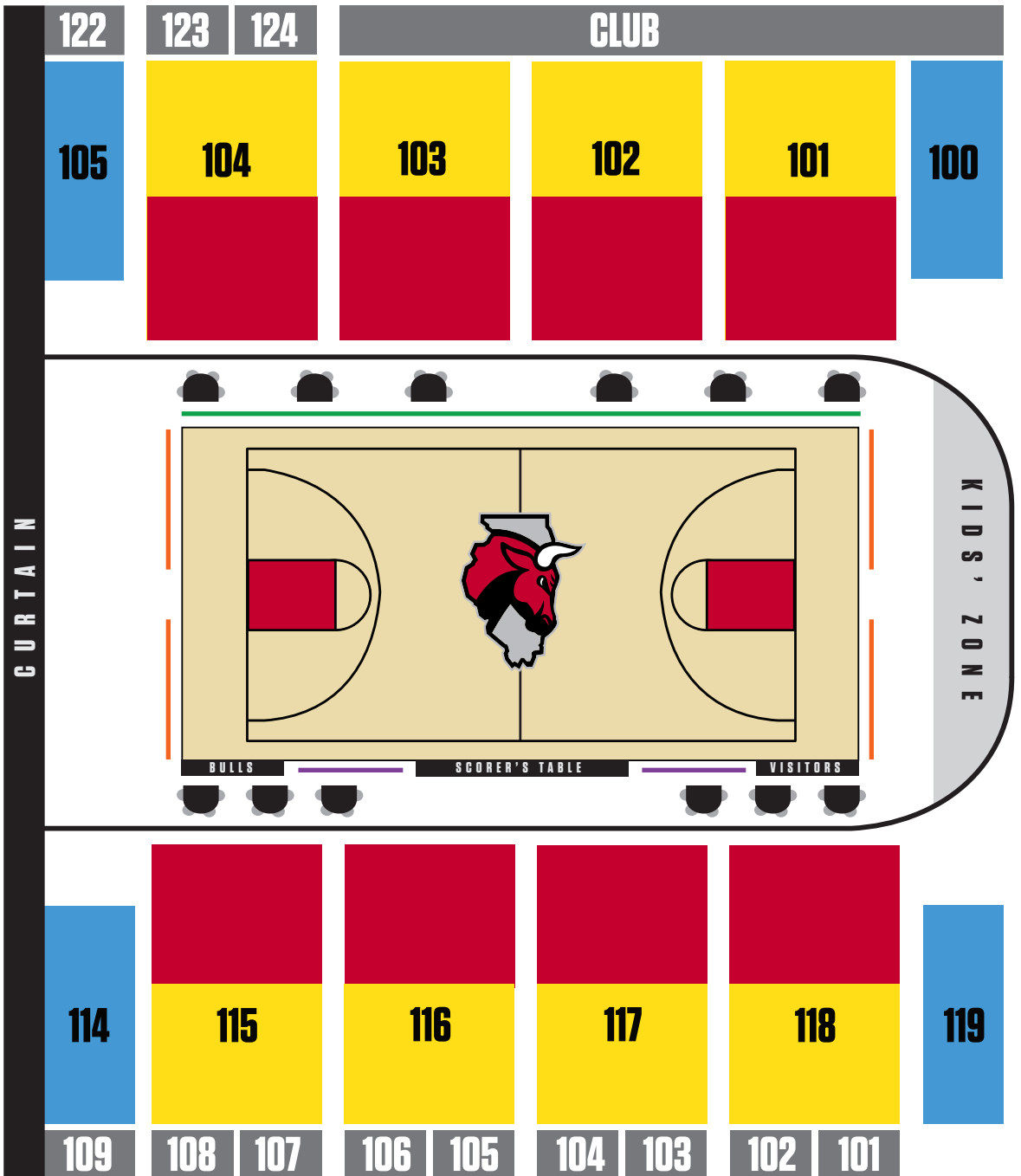




2017-18 SEATING CHART & MEMBERSHIP PRICING



Seating Section	Season / Per Game Membership	Half-Season / Per Game Membership	Advance Ticket Price	Day-Of Ticket Price
Courtside Tables (4 seats)*	\$7,680 / \$320	n/a	\$360	\$380
Bench*	\$2,400 / \$100	n/a	\$110	\$115
Sideline**	\$1,440 / \$60	n/a	\$70	\$75
Baseline**	\$1,200 / \$50	n/a	\$60	\$65
100 Level (Rows 1-7)	\$480 / \$20	\$264 / \$22 <small>(Sections 101, 104, 115 and 118 only)</small>	\$25	\$27
100 Level (Rows 8-19)	\$408 / \$17	\$228 / \$19 <small>(Sections 101, 104, 115 and 118 only)</small>	\$20	\$22
100 Level Sides	\$336 / \$14	\$192 / \$16	\$17	\$19

* Food and beverage included ** \$10 concessions credit included

WindyCityBulls.com | 847.396.7070

